



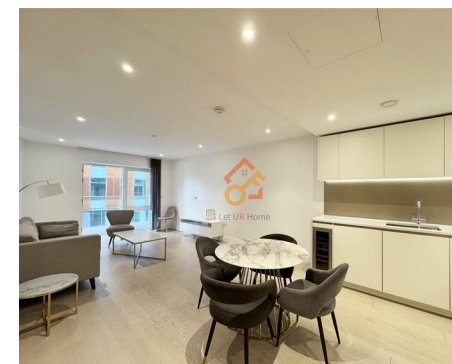
Let **UK** Home

**2 Bedrooms**

**Flat**

**Located in London**

**£1,200,000**



[info@letukhome.co.uk](mailto:info@letukhome.co.uk)

<https://www.letukhome.co.uk/>

01795 358 886



# Tierney Lane London

W6 9YG



Let UK Home are excited to offer this modern two-bedroom apartment in Faulkner House, part of Fulham Reach, located in the borough of Hammersmith and Fulham within the W6 postal district.

This property comprises a large bright open plan kitchen and living room leading to a large private balcony, two double bedrooms (master with fitted wardrobe & ensuite), a large family sized bathroom and ample storage.

The residents of this development will benefit from an extensive range of on-site facilities, including concierge, swimming pool, sauna, spa, wine cellar, billiards room, private screening room and virtual golf area.

Situated in Hammersmith, the property is within walking distance of Hammersmith Underground Station, served by four lines – Piccadilly, District, Circle and Hammersmith & City. Fast transport links run to Central London and the City, with top universities including Imperial College London, KCL, UCL, LSE and the University of Westminster all easily commutable.

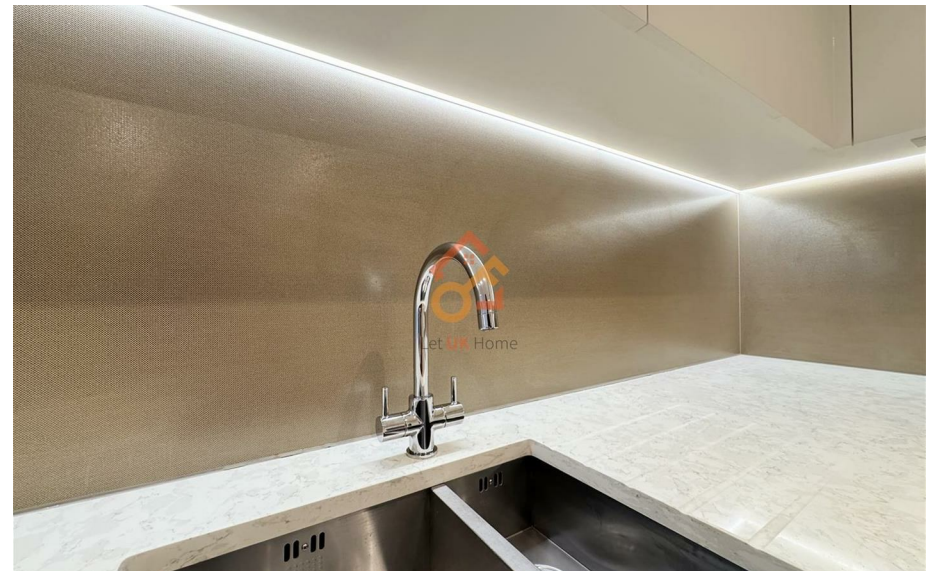
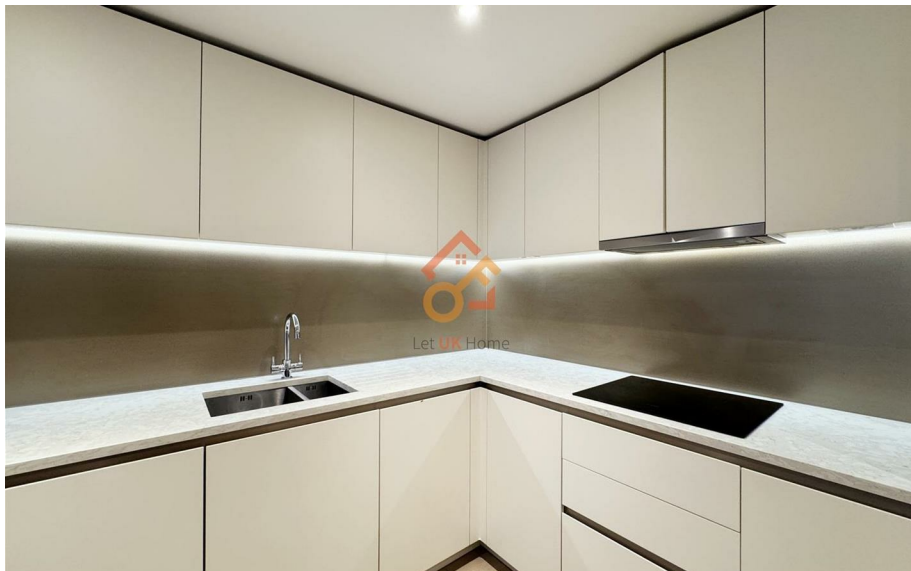
Residents benefit from convenient on-site retail and leisure amenities, featuring cafes, a French-style bistro, yoga studio and mainstream supermarkets, supporting relaxed riverside daily living all year round.

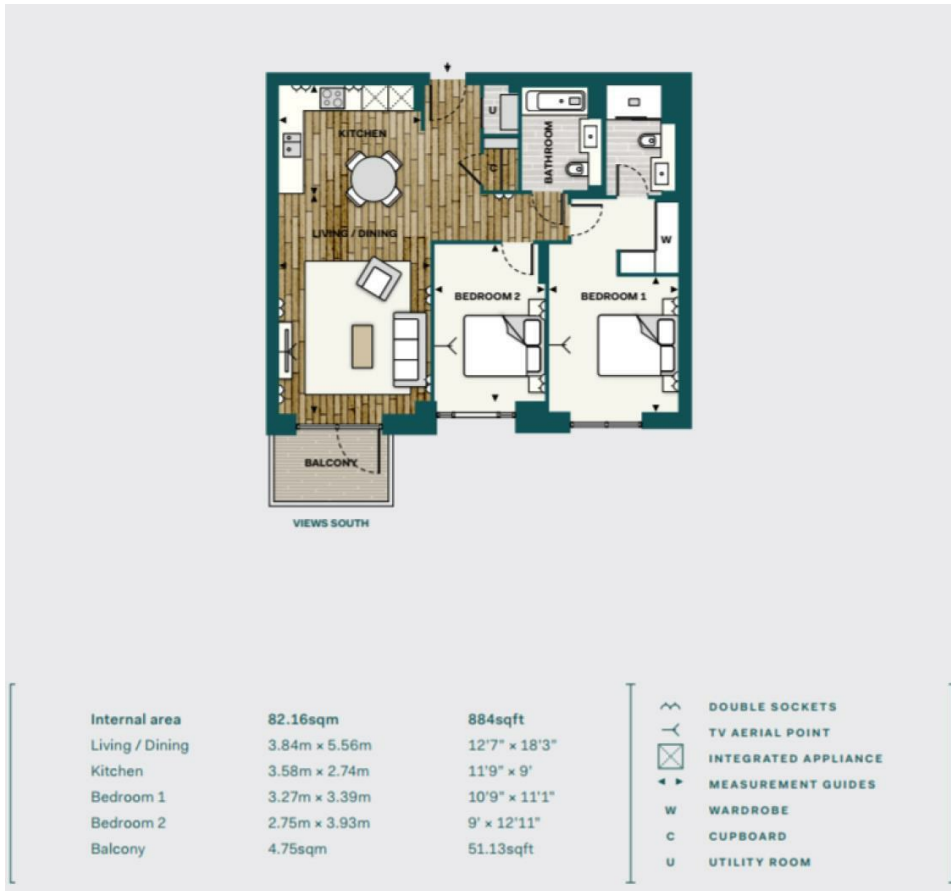
# Tierney Lane London

£1,200,000 Leasehold



- 2nd Floor
- 24h Security
- Virtual Golf Suite
- Cinema & Game Room
- EPC Rating: B
- Concierge
- Swimming Pool
- The Gym
- The Spa
- Virtual Tour Available





Let **UK** Home

3F 2 Eastbourne Terrace  
 Paddington  
 London  
 W2 6LG

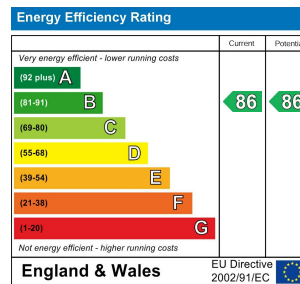
01795 358 886

info@letukhome.co.uk

**Council Tax Band: F**

**Local Authority:**

Agents Note: Whilst every care has been taken to prepare these particulars, they are for guidance purposes only. All measurements are approximate and are for general guidance purposes only and whilst every care has been taken to ensure their accuracy, they should not be relied upon and potential buyers/tenants are advised to recheck the measurements.



<https://www.letukhome.co.uk/>